



SAMPSON COUNTY  
911 & ES  
FACILITIES

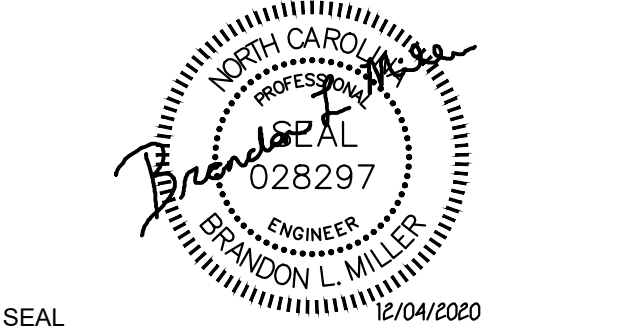
CLINTON,  
NORTH CAROLINA

CONSTRUCTION  
DOCUMENTS

AREA 3 SYSTEMS  
PLAN

DATE	12.04.2020	
PROJECT NO	20003	
REVISIONS		
NUM.	DATE	DESCRIPTION:

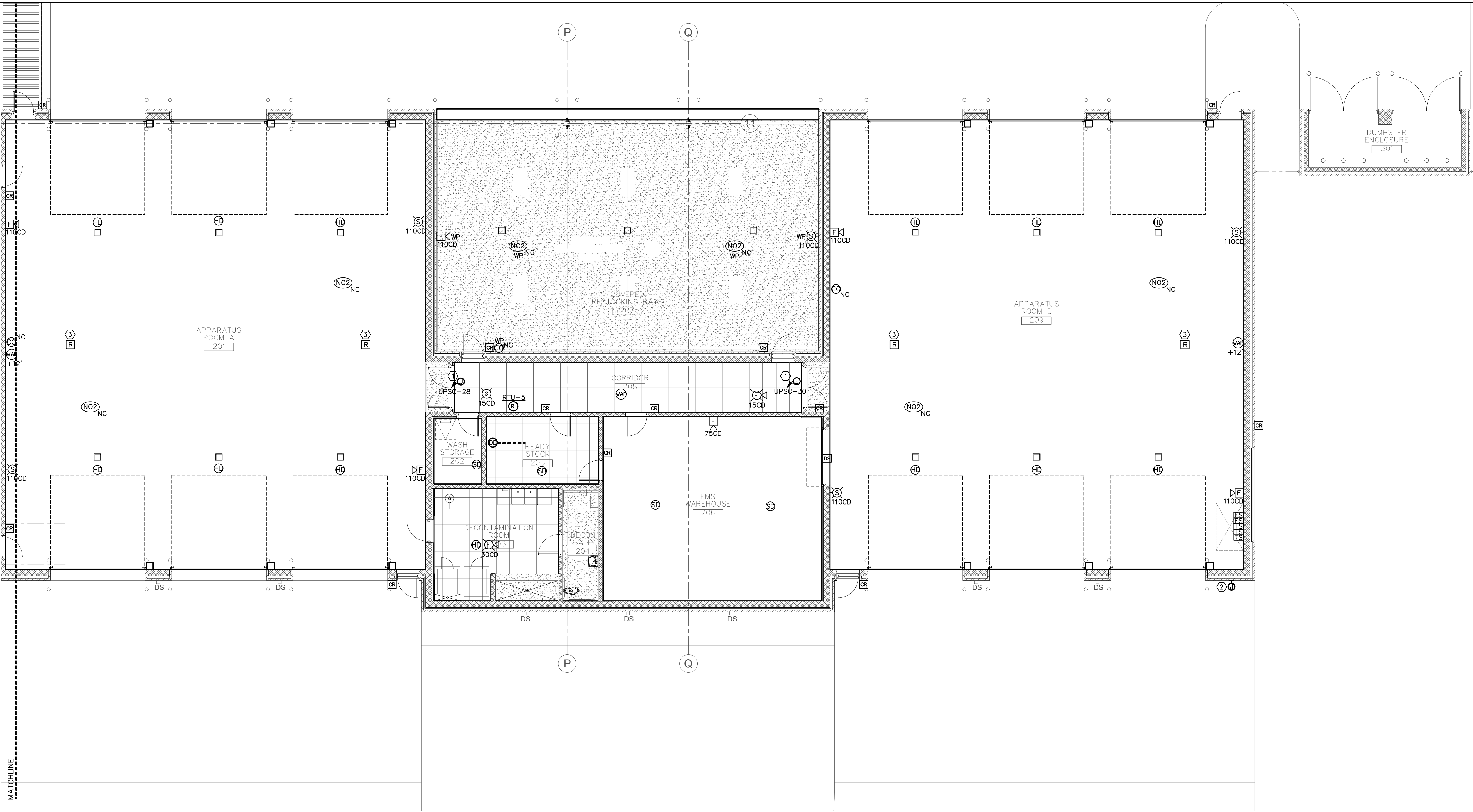
THIS DRAWING IS THE PROPERTY OF ADW ARCHITECTS, P.A., AND SHALL NOT BE REPRODUCED OR COPIED IN WHOLE OR IN PART. IT SHALL NOT BE USED ON ANY OTHER PROJECT OR GIVEN TO ANY OTHER COMPANY OR AGENCY WITHOUT THE CONSENT OF ADW ARCHITECTS, P.A.



SEAL

SHEET NUMBER

E403



1 AREA 3 FLOOR PLAN - SYSTEMS  
1/8" = 1'-0"

GENERAL NOTES

(APPLY TO THIS SHEET ONLY)

- ALL WALL MOUNTED DEVICES (POWER, DATA, SYSTEMS, ETC.), WITHIN CMU WALLS ARE TO BE FLUSH MOUNTED AND FED WITH CONCEALED CONDUIT.
- VERIFY ALL ACCESS CONTROL/SECURITY DEVICE LOCATIONS WITH SECURITY CONSULTANT PRIOR TO ROUGH-IN. PROVIDE ADDITIONAL CONDUIT STUBS AND PATHWAYS AS NEEDED.
- CARBON MONOXIDE / NITROGEN DIOXIDE COMBO DETECTOR IN APPARATUS BAY. INSTALL MAIN UNIT (CO SENSOR) AT 48" AFF. REMOTE SENSOR (NO2) SHALL BE INSTALLED 12' FROM CEILING. INTERLOCK WITH FANS F-12 & F-13 IN BAY 201, F-16 & F-17 IN BAY 209, AND F-15 IN BAY 207. COORDINATE WITH MECHANICAL CONTRACTOR FOR EXACT LOCATION. (NOT CONNECTED TO FIRE ALARM SYSTEM). CONNECT MAIN CONTROL UNIT TO LOCAL 120V RECEPTACLE CIRCUIT. HONEYWELL E3 POINT OT EQUAL.
- ALL WIRING SHALL BE IN CONDUIT IN THE APPARATUS BAY AREAS.
- FIRE ALARM PULL STATION/HORN/STROBE & SPEAKERS IN APPARATUS BAY SHALL BE NEMA-3R LISTED.

KEYED NOTES

(APPLY TO THIS SHEET ONLY)

- PROVIDE EMPTY J-BOX FOR SECURITY CONTROLS. COORDINATE ACTUAL LOCATION AND NUMBER OF BOXES WITH SECURITY CONTRACTOR.
- ELECTRIC SPRINKLER BELL. CONNECT TO LOCAL 24V FACP CIRCUIT. ACTIVATED WITH FIRE ALARM SIGNAL.
- HVLS FANS RF-1, 2, 3, 4 SHALL BE TIED INTO THE FIRE ALARM SYSTEM VIA RELAYS TO SHUT DOWN DURING FULL BUILDING FIRE ALARM NOTIFICATION. PART OF ALTERNATE #2.

